

Serial Communication Trouble Shooting Guide ^{PLUS} Models

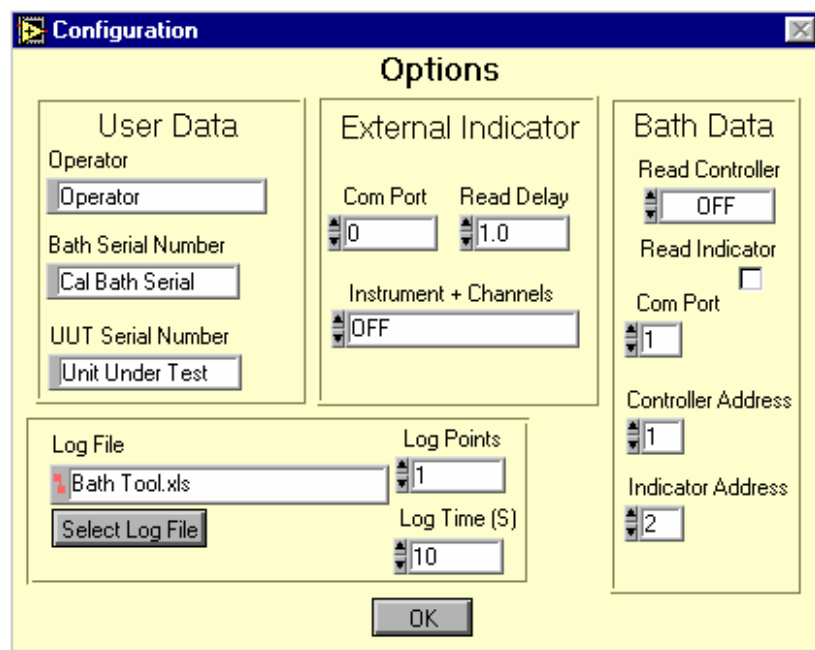
The PLUS series of Isotech Calibration Baths include a PC Interface (RS422 and a converter cable for use with a standard RS232 port as found on virtually all PCs

If communications can not be established with an Isotech Bath please follow the check list below

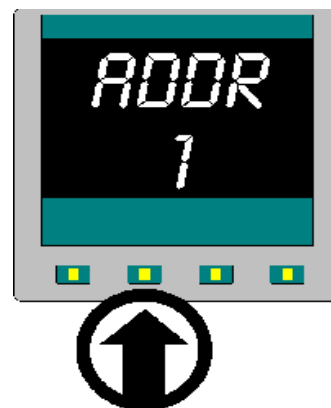
- 1 Ensure the supplied YELLOW converter cable is being used. A standard RS232 lead will not function on the standard models
- 2 Install Cal NotePad from the CD which accompanies the handbook. Even if other software is to be used please use Cal NotePad to verify the PC interface.
- 3 Ensure the Address and COM Port settings in Cal NotePad are appropriate

Set Read Controller to STANDARD

Set Controller Address and Indicator Address to match the Calibration Bath



On the Bath Press the Scroll Key (Second Left) until the upper display shows ADDR. Check the value matches that set in Cal NotePad.



Ticking the Read Indicator Box will (SITE (S) models only) allow the indicator to be read.

Finally check the "External Indicator Com Port" is not set to the same value as the Calibration Bath.

CalNote Pad should now read the values from the bath.

If communication with the bath is still unsuccessful then suspect the PC RS232 port. Connect an alternative serial device to the PC, for example a modem and verify the PC operation with that device.

Prior to dispatch the Calibration Bath and the supplied cable are fully tested at Isotech.

If problems persist before contacting Isotech please have to hand Calibration Bath Serial Number.