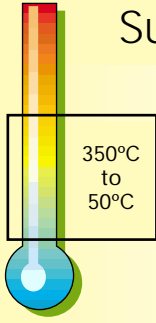


983 Small Hot Plate

Surface Sensor Calibrator



The Isotech Small Hotplate is a lightweight portable calibration system purpose designed for surface mounted sensors. The flat surface plate is made from precision-machined aluminum. The sensor to be tested is simply placed on the surface, for higher accuracy a calibrated surface sensor can be placed alongside and the two compared, see page 68 for details.

Good thermal contact is ensured by the flat disk that is recessed to allow the optional use of a heat transfer paste or fluid. Uniform heat distribution is achieved with a flat spiral heater clamped to an integrating block below the surface of the plate. The typical accuracy that can be achieved 1°C but this will be influenced by the type of sensor to be calibrated.

The internal control sensor is located immediately below the plate's surface.

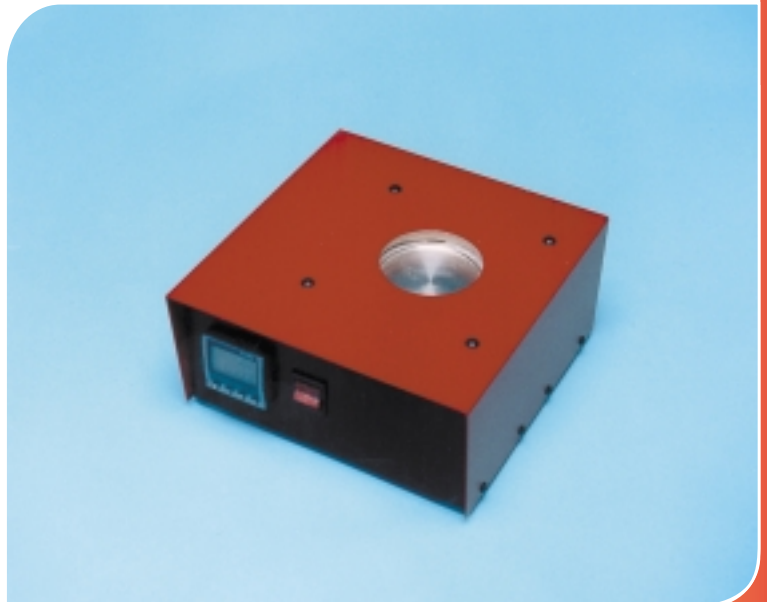
A protective cover that can fit over the block is included along with a comprehensive handbook. The Hot Plate can be supplied configured for Fahrenheit operation, please specify on order.

The temperature range is from 35 to 350°C, which is set by an advanced, but easy to use temperature controller. The controller has been upgraded to have 0.01 resolution below 100°C (0.1° above 100°). A PC interface is included as standard along with an RS232 converter lead and Windows software.

Isotech has a True Surface Temperature Measurement System (see page 72) which is ideal for use with this surface sensor calibrator.

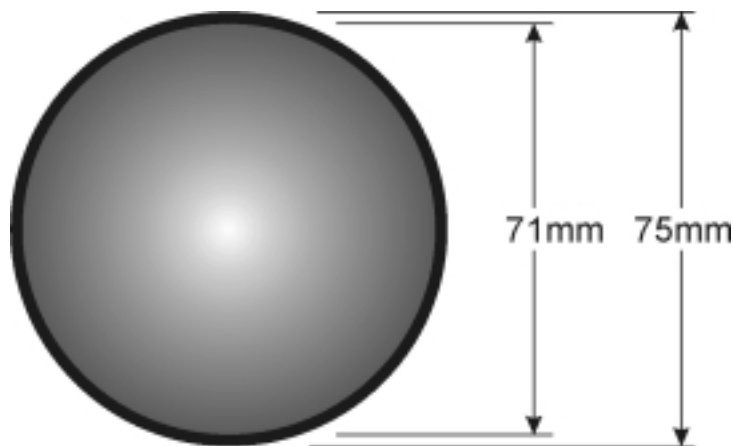
Key Features

- Low Cost Portable Hot Plate.
- PC Interface and Software.
- Stable to +/- 0.1C.



983 Small Hot Plate

Surface Sensor Calibrator



Dimensions of hotplate

Model No.	983 Small Hot Plate	
Temperature Range	50°C to 350°C	
Stabilisation Time	10 minutes	
Cools from	350°C to 100°C in 125 minutes	
Heats from	50°C to 350°C in 20 minutes	
Uncertainties	Dependant on sensors and method of use 1°C typical	
Calibration volume	Flat Plate 71mm diameter	
Display Resolution	0.01 to 99.99 0.1 100 to 350.0 PC can display 0.01 across whole range with the software included	
Indicator units	°C, °F, K	
Power	100 to 115V (50 / 60 Hz) or 200 to 230V (50 / 60 Hz) 200 Watts	
Overall dimensions	Height	115mm
	Width	230mm
	Depth	225mm
Weight	3.9kg	
How to Order	983 Small Hot Plate Please specify voltage required	

Notes:

A similar model but with a black high emissivity surface is available, please refer to databook 4 for details.

Many of the dry block calibrators featured earlier within this databook have accessories available for surface sensor calibration.