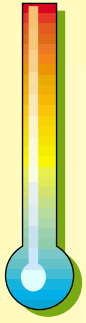


Cal NotePad

Software



The purpose of Cal NotePad (CNP) is to automatically log and display the temperature of an Isotech calibration bath together with the unit under test. Cal NotePad can be used with baths (or indicators) without PC interfaces by the user typing in values from the keyboard. The Cal NotePad can be used to identify the operator and the unit under test. With the click of a button data is logged with time information, it is also possible to log continually.

The calibration bath temperature can be changed from the PC or from the calibration baths controller - Cal NotePad will display the temperature changes as they occur on the re-scalable chart display.

For traceable calibration the unit under test should be compared to a calibrated standard thermometer. Cal NotePad can record the actual temperature of the bath from either the in-built indicator of an Isotech SITE model or from a variety of external instruments see list. If the external instrument has two channels (e.g. Isotech TTI) then the unit under test may be connected to channel B for logging with CNP. Alternatively the value can be typed in from the keyboard. Similarly the calibration bath controller value, actual temperature, SITE indicator value or unit under test value may also be entered manually.

Then the manually entered data is combined with that gathered automatically and the resultant file can be opened in an external application such as Excel for the preparation of reports, certificates etc.

Cal NotePad is designed for ease of use, it will give a chart of the system. When the operator determines the system is stable - easily seen from the chart then clicking a button will record time, operator, serial numbers of unit under test along with controller and indicator values.

Cal NotePad can be used for semi-automatic calibration, see I-cal for a fully automated calibration solution.

New in Version 2 :-



Temperature Programming

Program the bath to change temperature with time

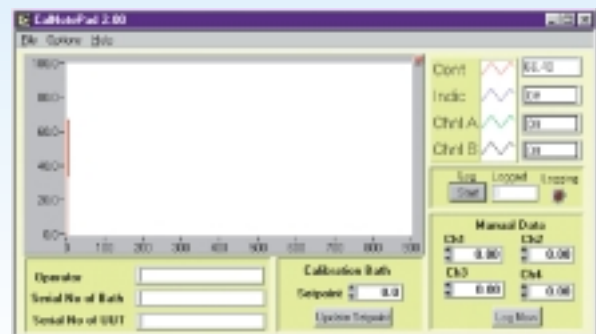
Ramp to Temperature

Program the bath to ramp between limits ideal for liquid in glass thermometry

Open new chart for individual channels

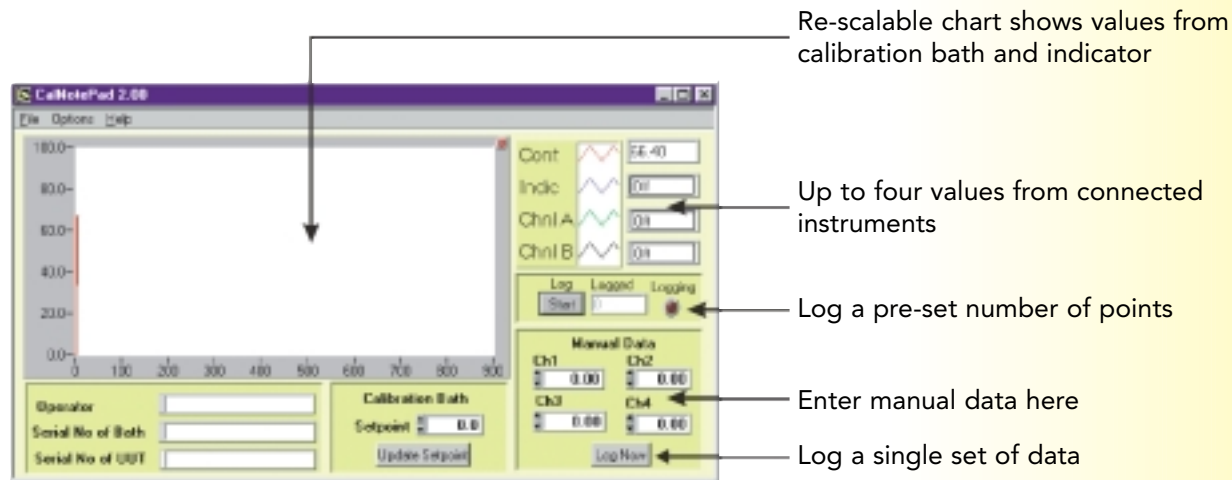
Key Features

- Included with the PLUS models, the Isocal-6 range and Dry Block Calibrators
- Provides Sophisticated Real Time Chart Display
- Record Isotech Calibration Bath and Indicator Data
- Export data for Excel, Word, etc



Cal NotePad

Software



Sample Output Data

Date	Time	User Name Here	Cal. Bath Number	Unit under Test No.	Controller	Indicator	ChnIA	ChnIB	Man Ch1	Man Ch2	Man Ch3	Man Ch4
1 May 1999	10:01:45	A User	ITL12345-1	Type K TC Plant 45	100	99.7	99.698	99.3	0	0	0	0

System Requirements

- CNP requires a PC with Windows 95/98
- 5Mb free hard drive space and a minimum of 8Mb RAM
- CNP is compatible with the following Isotech calibration equipment:-

Next Generation Dry Block Baths with RS232 or RS422 including:- Venus 2125 + 2150, Gemini 550 + 700, Jupiter 650, Venus, Gemini, Jupiter, Pegasus LAB models, ISOCAL-6 models with RS232 or RS422

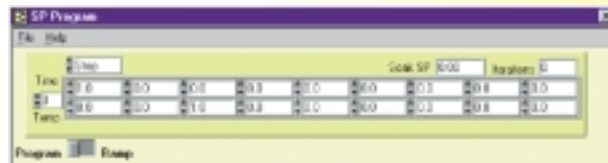
Isotech's Professional Comparison Baths with RS232 or RS422 - most models supported including:- Fluidised Furnace, Spherical Furnace, 915 + 814 Liquid Baths

Temperature Indicators: Isotech T.T.I.1, Isotech T.T.I.2, Isotech T.T.I.5, and Isotech T.T.I.6

In addition the following third party instruments are supported:- Labfacility Tempmaster, Labfacility Labcal +, Fluke 45 DVM, in built conversion for type K, J, E, R, S, T, N, B (external CJC required) or Volts/Ohms display, Cropico, 3000 Series, and similar models with the same command protocol, e.g. ASL F150, Tinsley 5885 etc.

Manual Entry: -

Any instrument data can be typed into Cal NotePad.



How to Order Cal NotePad

Supplied on 3.5" disks with a comprehensive manual