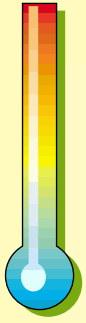


I-Cal

Software



I-cal is a new software application designed for automatic temperature calibration using Isotech products. It is affordable, easy to use and modular.

In the simplest form it can be used with a SITE Dry Block Calibrator to automatically calibrate a single sensor against the block temperature.

To calibrate multiple sensors simply add an Isotech Selector Switch - there are two models; one for up to eight resistance thermometers and one for up to eight thermocouples. You can have a total of two boxes, any combination, to calibrate up to 16 sensors!

I-cal also supports the TTI-5 and TTI-6 indicators and with these you can easily build an automatic calibration system to calibrate up to 16 sensors on the TTI's channel B, with a standard probe on channel A. The calibration results are saved to a text file that can be opened in your preferred application to create a certificate or report.

I-cal CAPTURE is suitable for the automatic calibration of hand-held thermometers and similar devices. Previously hand-helds could not be easily calibrated automatically because most models do not have provision for a connection to a PC. I-cal CAPTURE solves this by using a low cost camera. I-cal, as usual, monitors the dry block bath / standard for stability, it then grabs an image before setting the bath to the next temperature. The image is captured with the date and time to make a complete visual record (as shown).



A caption is added showing dates, time and the standard temperature.



Key Features

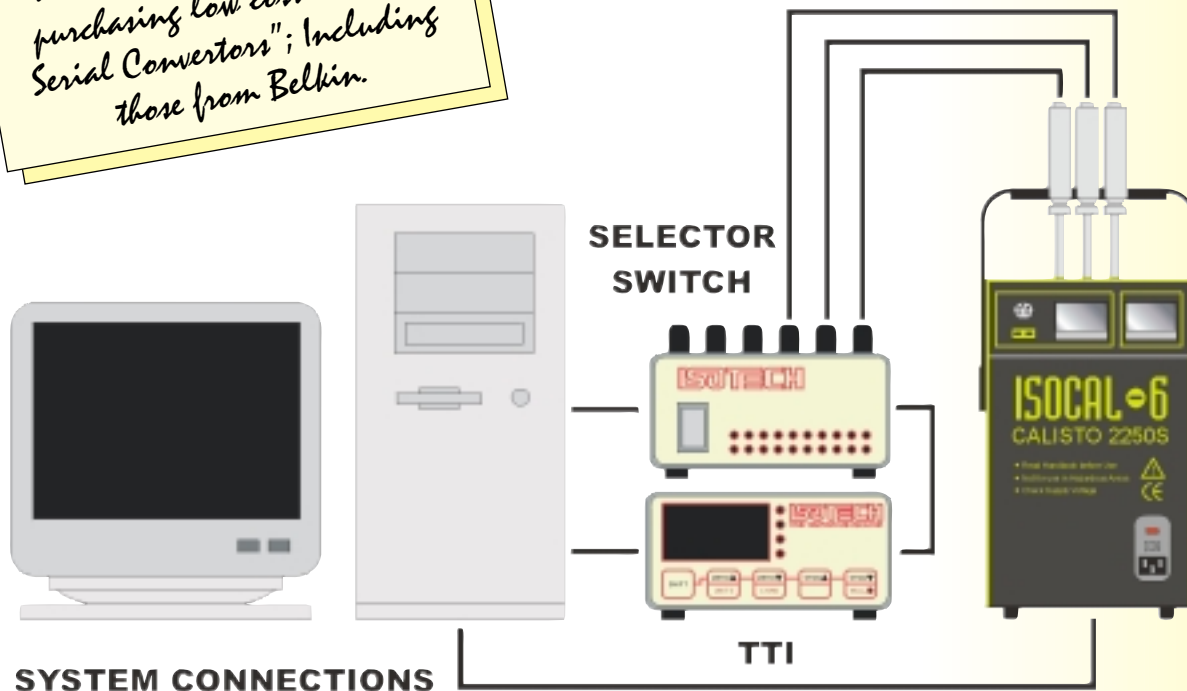
- **Use ISOTECH equipment to automatically calibrate temperature sensors**
- **Affordable and Expandable** - A Selector Switch and or True Temperature Indicator can be added to the Dry Block at any time
- **Calibrate up to 16 sensors** - Use two switchboxes to calibrate up to 16 sensors at up to 10 temperatures
- **Save Time** - Set I-cal going, go home and return to the calibration results!
- **Results saved to Text File** - the calibration results are stored to a text file for you to process
- **I-cal CAPTURE can save images** - of devices like handheld thermometers that can not be connected to the PC



I-Cal

Software

*Hint
Extra serial ports can easily be added to a PC with USB by purchasing low cost "USB to Serial Converters"; Including those from Belkin.*



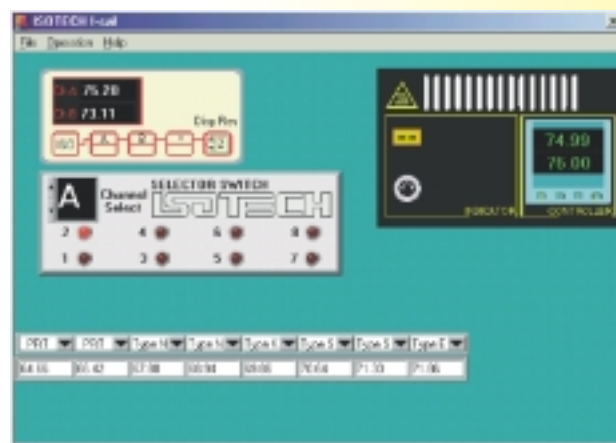
Minimum System Requirements

- Desktop or Notepad PC
- 166Mhz Pentium Processor with mmx or greater
- 32Mb Ram (I-Cal Capture 64Mb Ram)
- 800 x 600 / 16 bit display

I-cal	Windows 95 Windows 98 Windows 98ME Windows NT4.0
I-cal Capture	Windows 95 Windows 98 Windows 98ME
I-cal Capture - Supported Camera	Intel PC Camera Pro Pack (Recommended, check with ISOTECH for other supported models) 150Mb free Hard disk space
Serial Ports	A maximum of three ports are required, one for the dry block, one for the TTI and one for the Switchboxes (Two Switchboxes can be operated from a single port)

I-cal the affordable automatic calibration system

Win 9x - Expandable
Calibrate RTD's and thermocouples



How to Order I-cal
I-cal CAPTURE